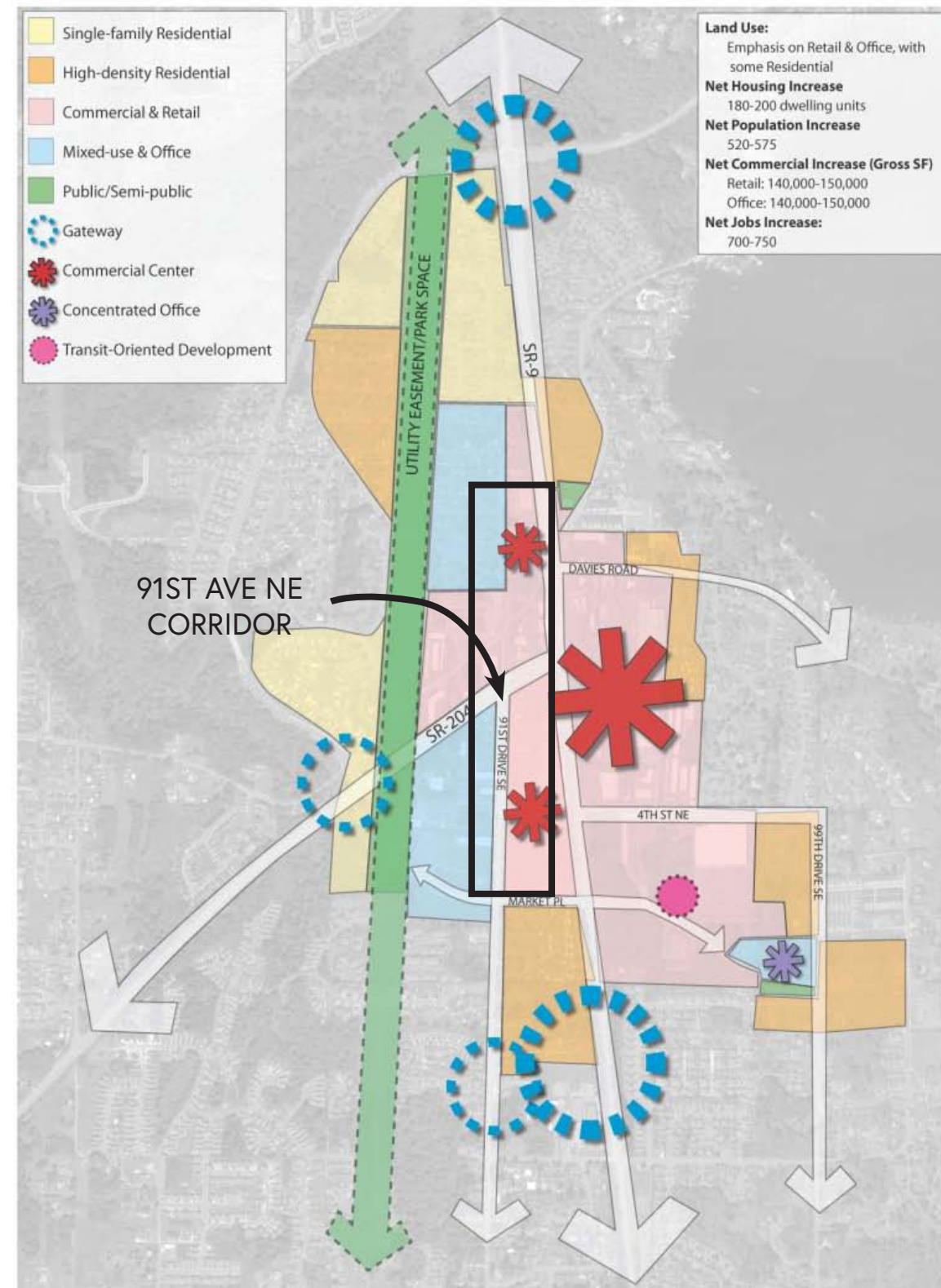




91st Ave NE Streetscape Revitalization Project

Public Open House | Summer 2023

91ST AVENUE NE STREETScape PROJECT



SOURCE: LAKE STEVENS CENTER
REVITALIZATION PLAN

PROJECT GOALS:

The goals of the 91st Ave NE Streetscape project are to:

- Create an inviting "main street" shopping district along 91st Avenue NE that better connects the retail core with the surrounding residential areas
- Develop a more pedestrian-oriented streetscape with amenities such as wider sidewalks, seating, improved lighting, wayfinding, and public art
- Safely accommodate bikes and vehicles moving through the corridor
- Incorporate low impact stormwater design to filter runoff from impervious surfaces

EXISTING CONDITIONS: Market Place to Mid-block

LEGEND

EXISTING ROW LINE

PARCEL BOUNDARY

POTENTIAL ROW PURCHASE FOR ROADWAY WIDENING + PEDESTRIAN AMENITIES

HIGH VOLTAGE POWER LINE

LOW VOLTAGE POWER LINE

EXISTING UTILITIES / SIGNS WITHIN 5' OF BACK OF WALK

GENERAL COMMENTS

• High voltage power lines must remain, low voltage power and communication can be undergrounded

• Pedestrian lighting is sparse throughout corridor

NOTES

① Pole could be removed with aerial undergrounding

② End of high voltage power lines along 91st - pole must remain, may require relocation

③ Would need to convert diagonal parking to parallel or remove parking along frontage

④ Existing signs, hydrant, and utility poles require relocation or removal

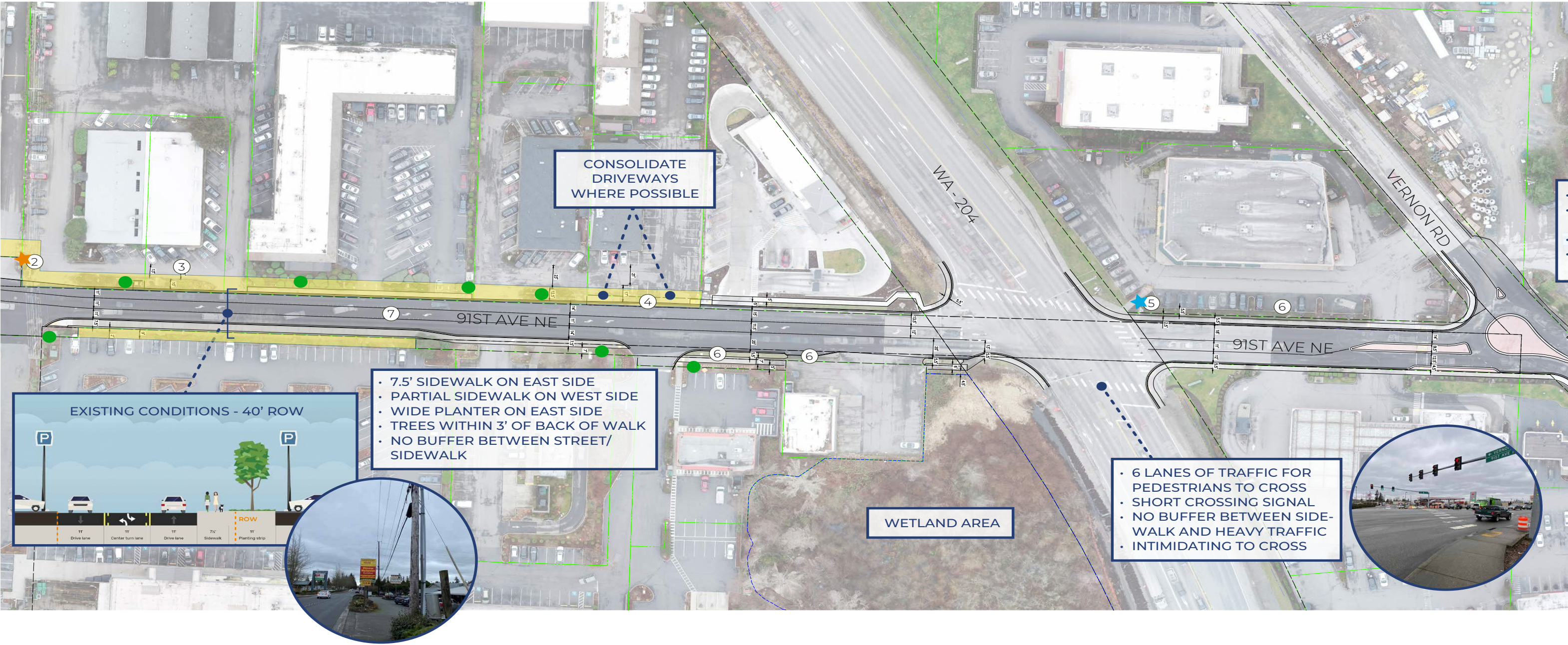
⑤ End of aerial utility line, power and comm lines - utility lines have been undergrounded north of here

⑥ Widening here would require retaining wall

⑦ Large distance between pedestrian crossings

⑧ Poor sight distance at corner

EXISTING CONDITIONS: Mid-block to Vernon



EXISTING CONDITIONS: Vernon to 10th St NE

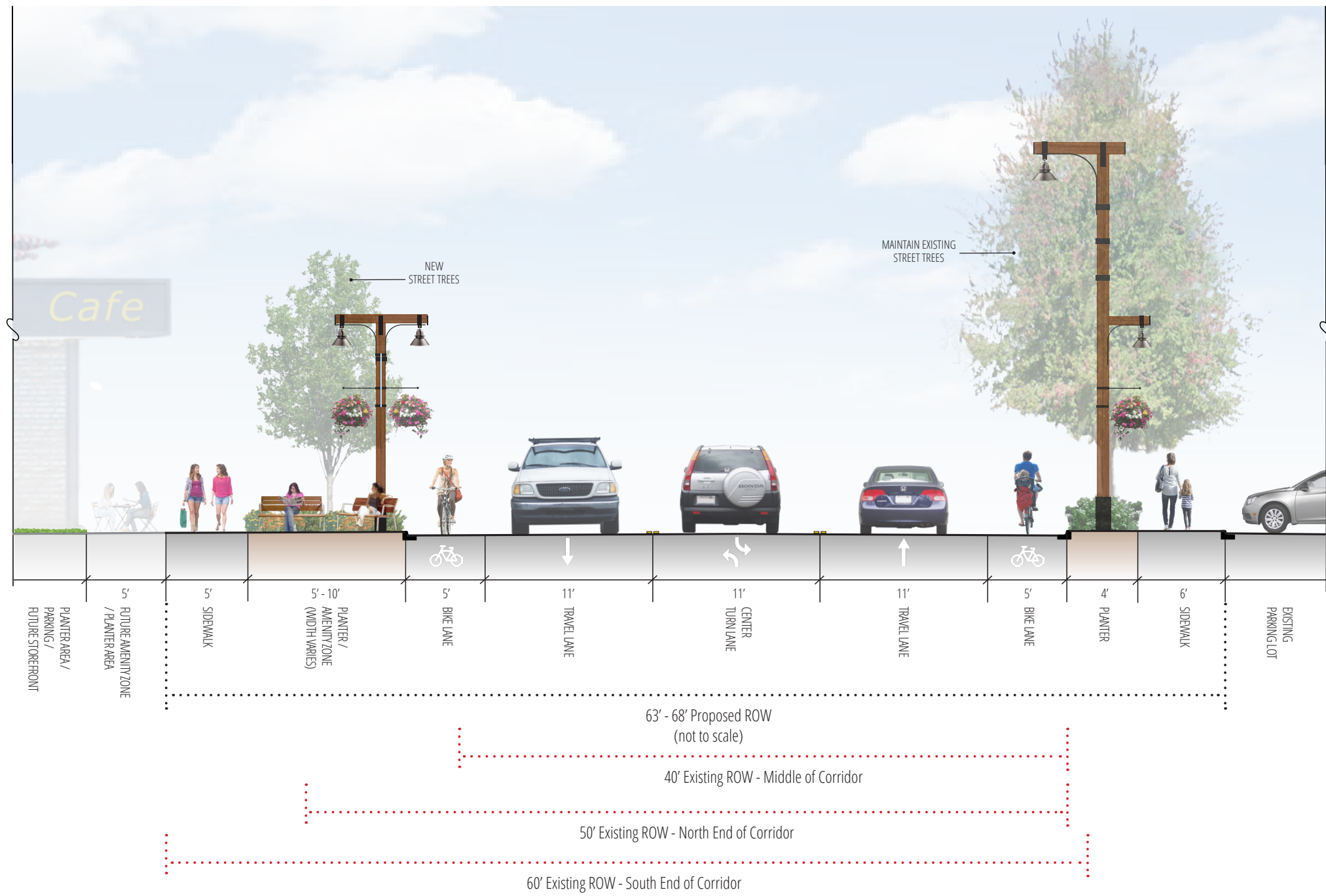


EXISTING CONDITIONS: 10th St NE to 13th St NE



OPTION 1-A:

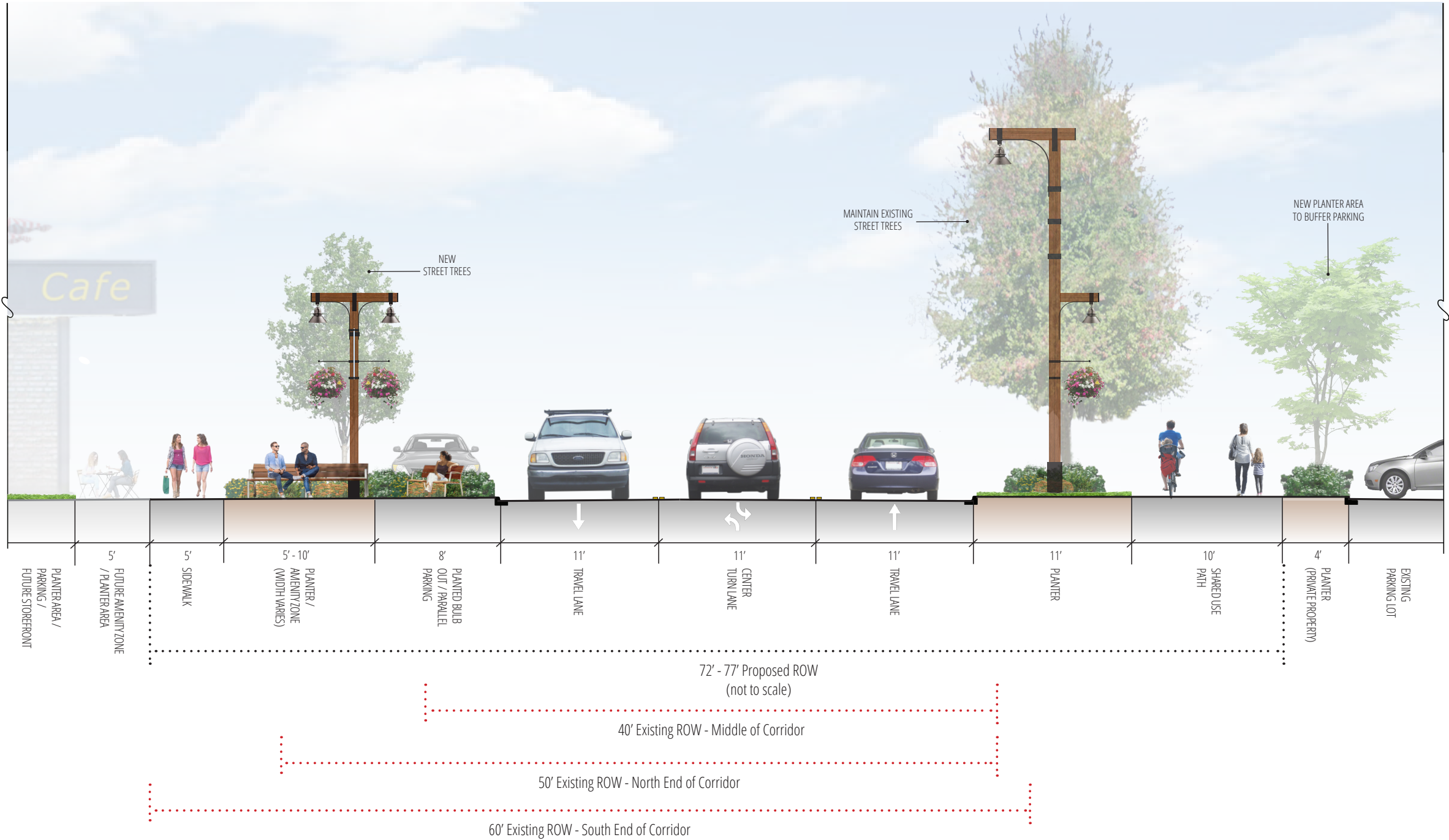
Section 1-A with Bike Lanes
91st Ave NE Streetscape Project
91st Ave NE from Market Place to Hwy 204
(Looking North)



* Note: Does not meet Lake Stevens design guideline for 4' parking lot buffer.

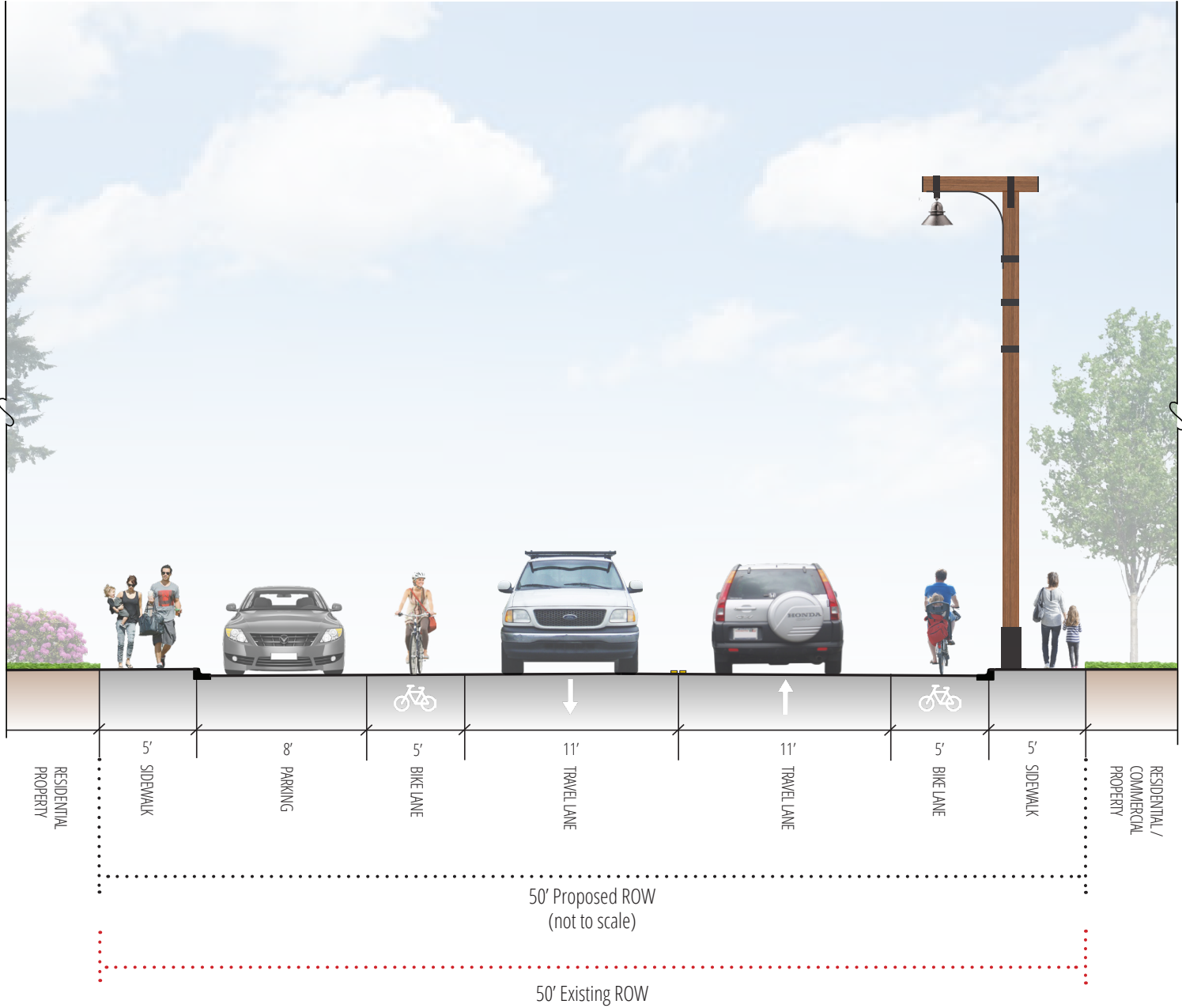
OPTION 1-B:

Section 1-B with Shared Use Path
91st Ave NE Streetscape Project
91st Ave NE from Market Place to Hwy 204
(Looking North)



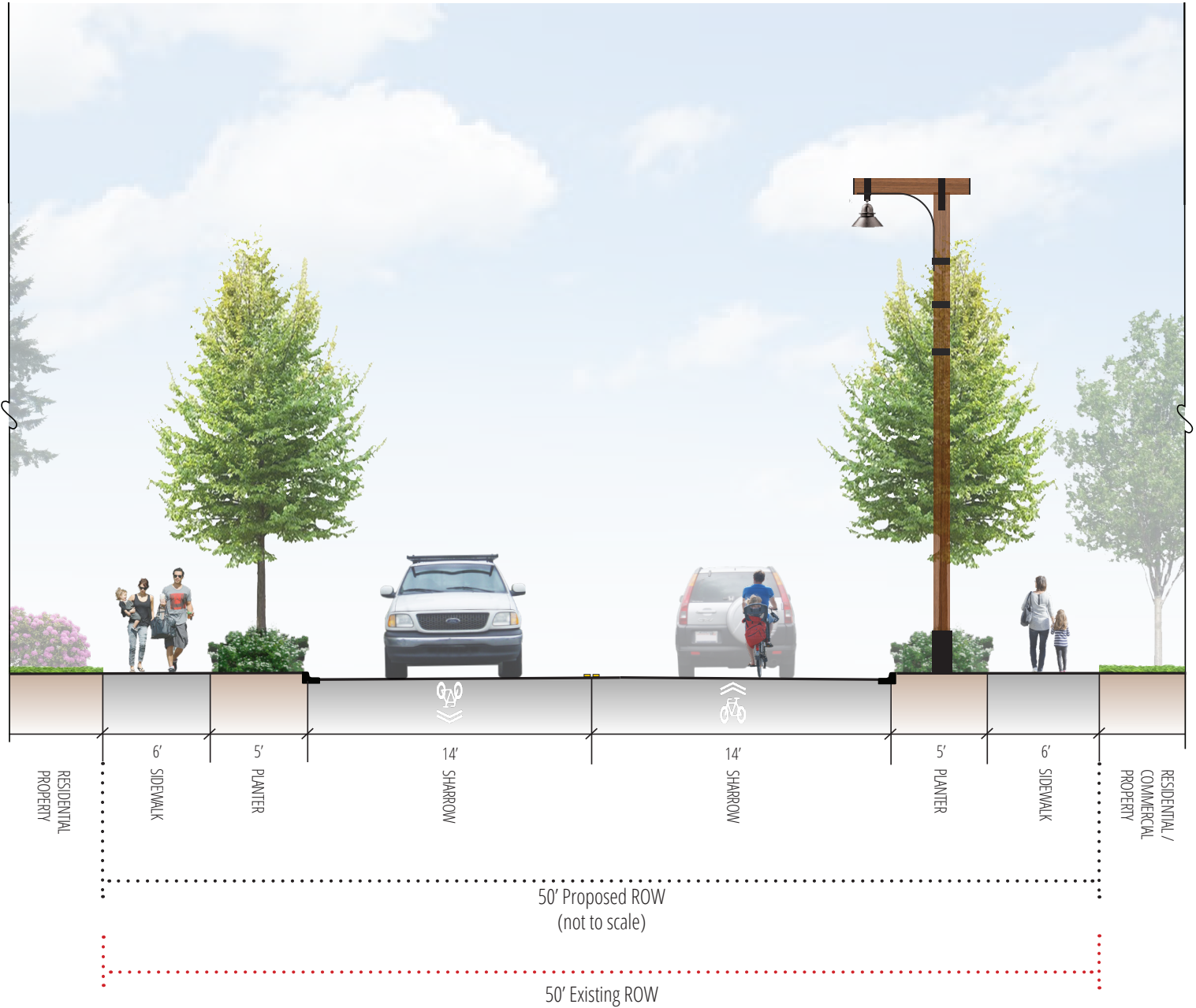
OPTION 2-A

Section 2-A: Residential with Parking on One Side + Bike Lanes
91st Ave NE Streetscape Project
Frontier Circle E from Frontier Circle to 13th St NE
(Looking North)



OPTION 2-B

Section 2-B: Residential with Planters + Sharrows
91st Ave NE Streetscape Project
Frontier Circle E from Frontier Circle to 13th St NE
(Looking North)



SHARE YOUR THOUGHTS!

Visit the City's website for 91st Ave NE Streetscape updates:

<https://www.lakestevenswa.gov/87/Economic-Development>



For all inquiries and ideas **reach out** to:

Russ Wright, Community Development Director

phone: (425) 622-9424

email: rwright@lakestevenswa.gov