



LAKE STEVENS COMPREHENSIVE PLAN UPDATE

As the city contemplates the next 20 years, it must embrace its position as a unified growing city.

The Lake Stevens Comprehensive Plan considers issues affecting the city over the next 5, 10 or 20 years and adopts specific growth targets for population, housing and employment. The last major update to the Comprehensive Plan was completed in 2015. Throughout the next year we will develop new updates for completion at the end of 2024.

A city's comprehensive plan must be updated every 10 years to comply with state law. The plan should also respond to the significant changes Lake Stevens has gone through over the past decade.

Elements of the Comprehensive Plan

Land Use

The city's Land Use Element considers land use forecasts and growth targets for the next 20 years for population, housing and employment. This is a crucial part of this year's plan update.

Housing

The Housing Element is used to describe current population and housing trends in the city utilizing the recently completed Housing Action Plan.

Environment and Natural Resources

The new Climate Sustainability Plan, and coordination with other state and regional agencies, will work to improve air quality and address climate change.

Parks

The Parks Element includes an inventory of parks, recreation and open spaces, and how they meet the community's needs.

Economic Development

Specific strategies supporting job diversification, retail and personal services and industry growth.

Capital Facilities

Goals and Policies were updated to reflect the city's desire to be a sustainable community around the Lake with unsurpassed infrastructure supporting an exceptional quality of life.

Transportation

A new Transportation Master Plan will directly impact the updated transportation analysis in this section.

Public Services and Utilities

This inter-agency section features local service providers such as the Lake Stevens Sewer District, Lake Stevens Fire, and the Lake Stevens School District to ensure service continuity as the community grows.



Plan Update Engagement Timeline

July - September 2023

- Community Survey Opens

October - December 2023

- Public Kick-off Meeting
- StoryMap launch
- Community Survey closes

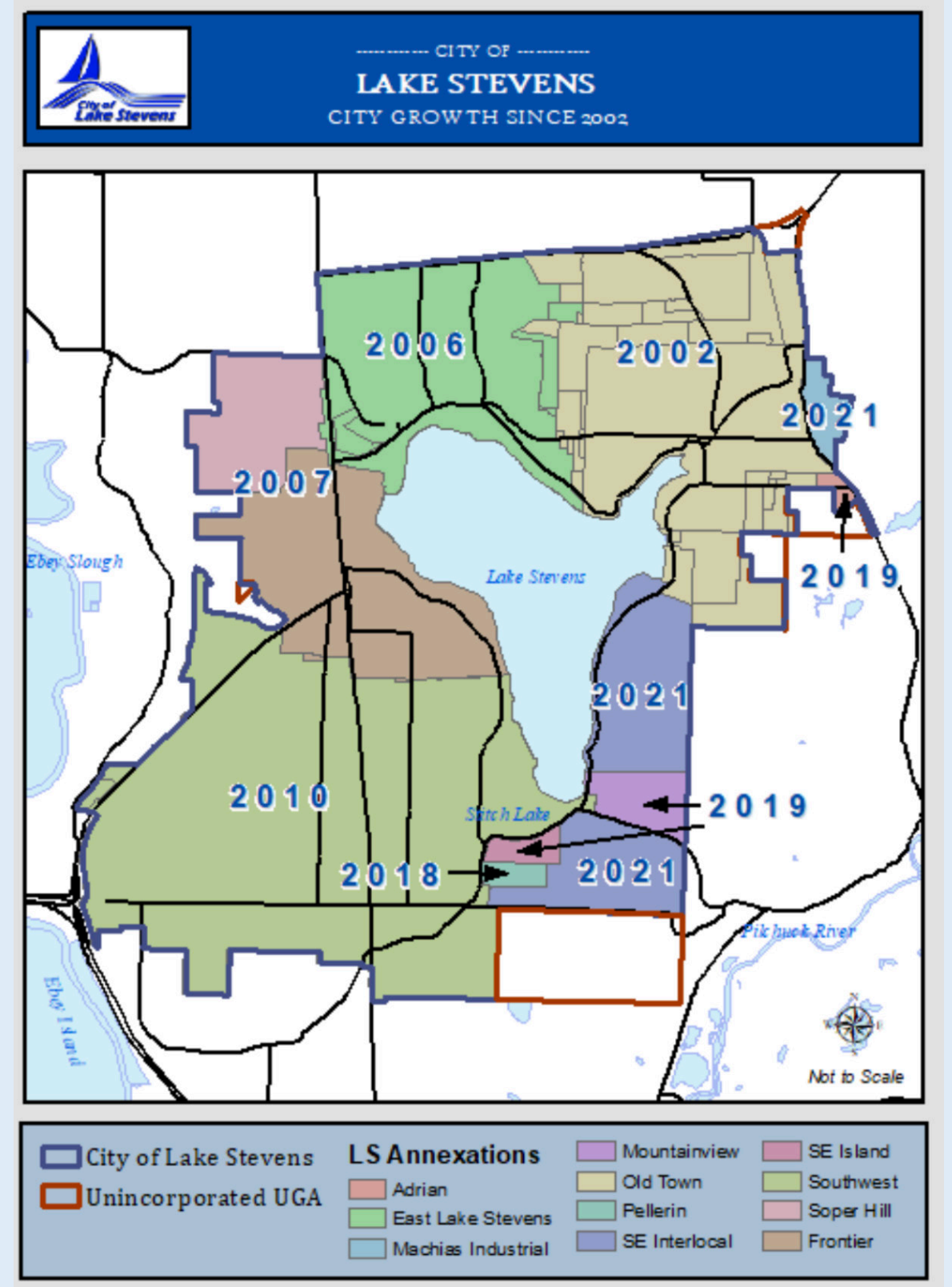
January - March 2024

- Community Survey results published
- Topic-specific webinars on elements of the plan, such as Housing, Industrial Lands planning, Transportation, and Capital Projects.

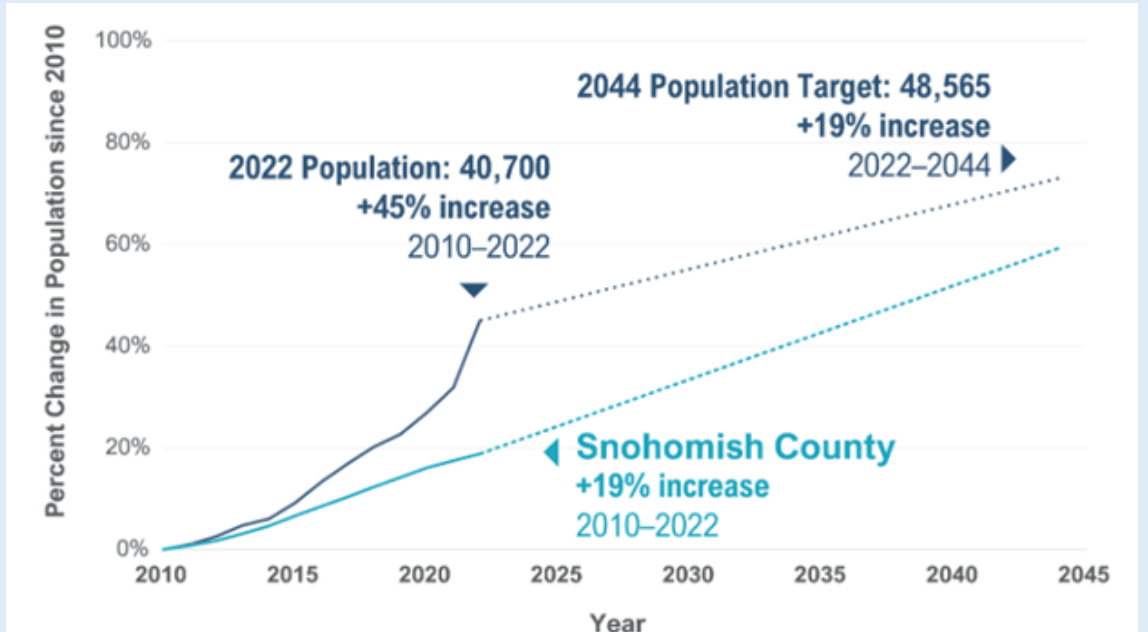
April - June 2024

- Open House event to share findings and a draft of the comprehensive plan update.
- Final Report of the engagement process results published as part of the final comprehensive plan update.

Lake Stevens Annexations and Land Use



In addition to a growing population, we've added almost 600 acres of land to the city boundaries through the 2021 annexation alone, and adopted four specific plans covering the city's growth centers.



Community in Action

Above: Eagle Ridge Community Garden
Top Right: Diwali 2022
Bottom Right: LSPD Polar Bear Plunge



To learn more about recent efforts and proposed updates, please visit the city's Comprehensive Plan webpage.