

ACCESSIBLE PARKING & ACCESSIBLE ROUTE HANDOUT

NEW OR REVISED PARKING FACILITIES:

PARKING AND ACCESS AISLES

- Van accessible parking space: 11 feet wide with five foot adjacent access aisle, or eight feet wide with eight foot adjacent access aisle; angled van parking requires passenger side access aisle.
- Car accessible parking space: Eight feet wide with five foot adjacent access aisle.
- Access aisle shall be full length and on same grade as parking space served; including markings to discourage parking.
- Cars and vans parked in designated parking and access aisles shall not obstruct required clear width of adjacent accessible routes.

SLOPE AND VERTICAL CLEARANCE

- Parking spaces and access aisles shall have surface slope not greater than 2% slope (1:48 units).
- Van accessible vertical clearance shall be 98 inches for parking space, access aisle, and vehicular entrance/ exit.

NUMBER REQUIRED AND LOCATION

- Number of van spaces: For every six (*or fraction of six*) accessible parking spaces required, at least one shall be a van accessible space.
- Signage shall be required for accessible parking spaces set forth by current Washington State Department of Transportation Code.
- Parking shall be located on the shortest accessible route of travel from adjacent parking to an accessible building entrance. Refer to International Building Code (IBC) section 1106.6 for variations and exceptions.

TABLE 1106.1
ACCESSIBLE PARKING SPACES

TOTAL PARKING SPACES PROVIDED	REQUIRED MINIMUM NUMBER OF ACCESSIBLE SPACES
1 to 25	1
26 to 50	2
51 to 75	3
76 to 100	4
101 to 150	5
151 to 200	6
201 to 300	7
301 to 400	8
401 to 500	9
501 to 1,000	2% of total
1,001 and over	20, plus one for each 100, or fraction thereof, over 1,000

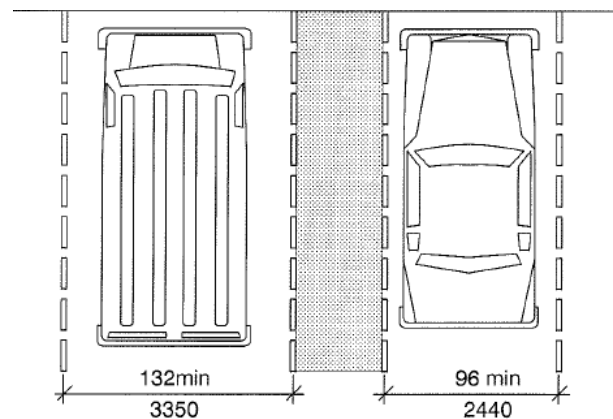
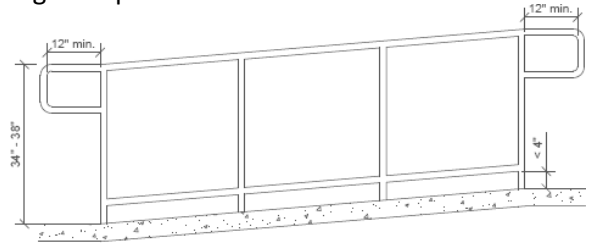
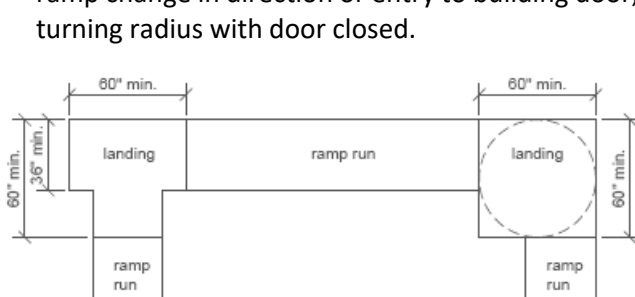


Fig. 502.2
Vehicle Parking Space Size

ACCESSIBLE ROUTE TO BUILDINGS: EXTERIOR RAMPS AND CURB RAMPS

RAMPS

- Five foot long landings shall be at top and bottom of each ramp run for the width of ramp. For ramp change in direction or entry to building door, the landing shall provide a minimum five foot turning radius with door closed.



- Walking surfaces shall be stable, firm, slip resistant, and prevent the accumulation of water.
- A maximum slope of 8% (1:12) is allowed where the maximum rise for any run is 30 inches with a cross slope of 2% or less.
- Handrails shall have a minimum width of 44 inches between rails.

HANDRAILS

- Provide 34-38 inch high handrails at ramp runs greater than six inches.
- Handrails shall extend at least one foot beyond the top and bottom of any ramp run.
- Handrails shall be graspable circular shape between 1 ¼ and two inch, typical. Other shapes per IBC section 1012.3.
- Gripping surface of handrail shall be continuous without interruption by support or other obstructions.

RAMP AND LANDING EDGE PROTECTION

- A curb or barrier is required that prevents the passage of a four inch sphere for ramps without railings. When applied, railings are required to have one of the following features:
 - An intermediate rail mounted 17-19 inches above the ramp or landing surface;
 - The surface of the ramp or landing extends one foot beyond the inside face of the railing.
 - Edge protection shall not required where the ramp rise is no more than six inches above grade and ramp meets curb requirements. Subject to field inspection.

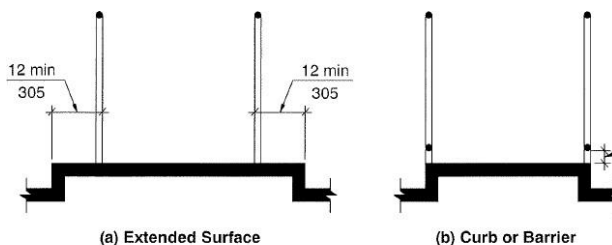


Fig. 405.9
Ramp Edge Protection

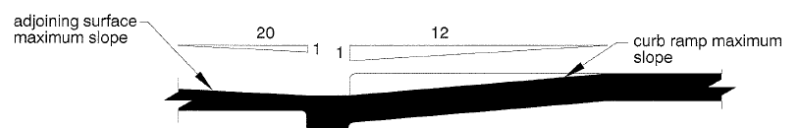


Fig. 406.2
Counter Slope of Surfaces Adjacent to Curb Ramps

GUARDS

- Provide 42 inch tall guards for portions of landings/ ramps more than 30 inches above adjacent grade.
- Guard openings should not allow a four inch sphere to pass through, except as noted in IBC section 1013.3.

CURB RAMPS

- Curb ramps (three foot minimum width; four foot width in Public Right of Way) and flared sides (10% maximum slope) should not be obstructed by parked vehicles or project into parking or parking access aisles.
- Three foot long landings (four foot in Public Right of Way) shall be provided at the top of curb ramps for the width of the ramp.
- Alternative: Flared sides should not exceed 8% slope.

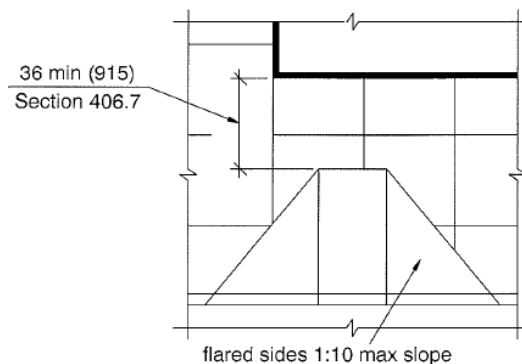
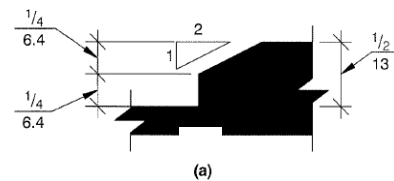
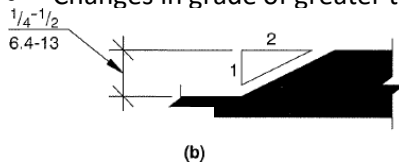


Fig. 406.3
Sides of Curb Ramps

BUILDING ENTRY LANDINGS

- Landing length in the direction of travel of not less than 44 inches with width not less than the door.
- Landings shall be required on each side of door at same elevation.
- Changes in grade of greater than $\frac{1}{2}$ inch shall be ramped.



BUILDING ENTRY DOORS

- Maneuvering clearances for doors may overlap the landing area where doorways are adjacent to the ramp.
- Door opening shall provide a clear width of 32 inches between face of door (open at 90 degrees) and stop.
- Door hardware shall not require tight grasping, tight pinching, or twisting of the wrist to operate.
- Door access clearances shall be provided on both sides of the accessible door, as shown below.

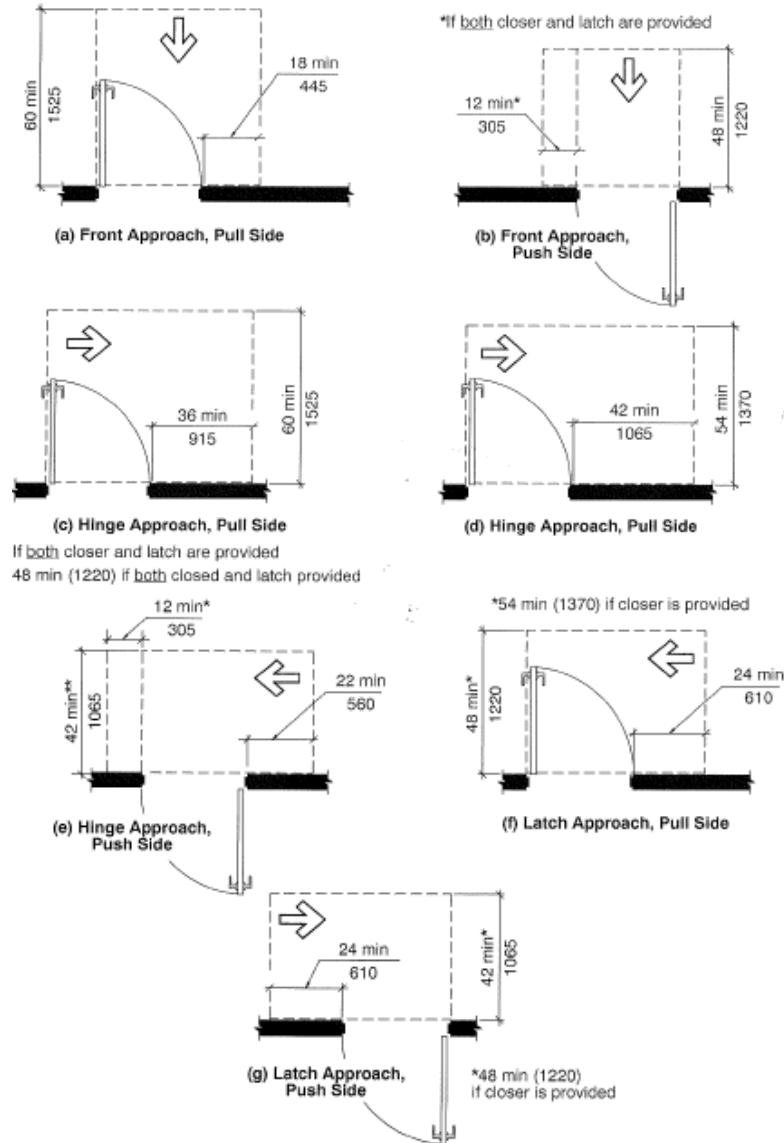


Fig. 404.2.3.1
Maneuvering Clearance at Manual Swinging Doors

APPLICABLE CODES AND REFERENCES

- International Building Code (IBC), 2021 Edition & WAC 51-50
- International Existing Building Code (IEBC), 2021 Edition & WAC 51-50
- International Property Maintenance Code (IPMC), 2021 Edition & WAC 51-50
- Accessible and Usable Buildings & Facilities, ANSI A117.1-2017 & WAC 51-50-005