

# Public Notice

## Swimmer's Itch

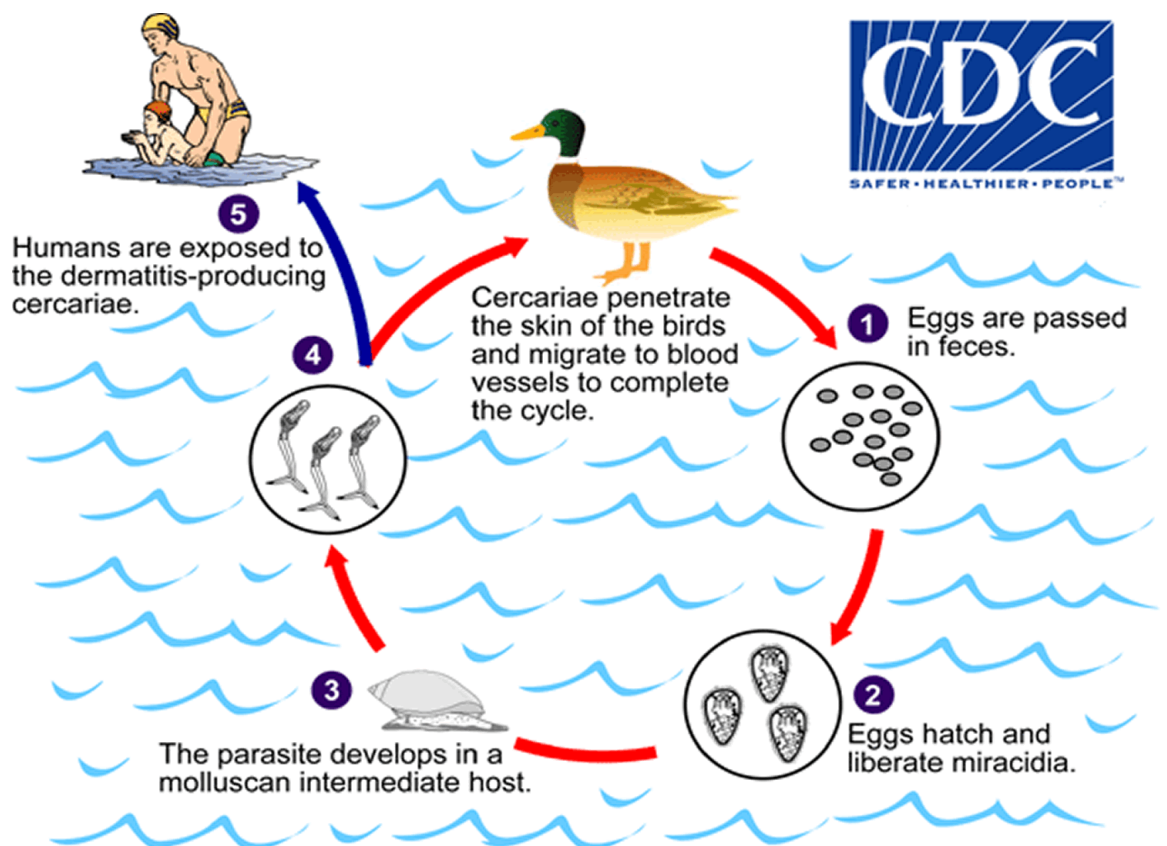
### What is it?

Swimmer's itch, also called Cercarial Dermatitis, appears as a skin rash.

- Caused by an allergic reaction to a parasite that burrows into the swimmer's skin
- Most common occurrence is in early summer

### How to Reduce Your Risk?

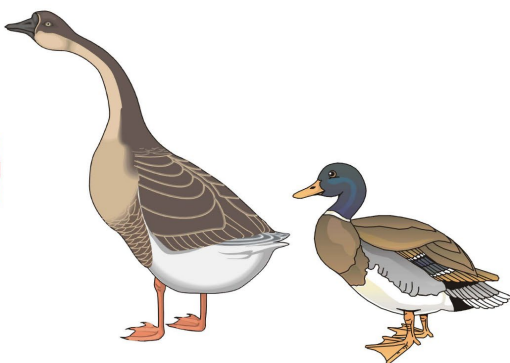
- Apply waterproof sunscreen before you enter the water
- Towel off immediately after leaving the water
- Shower with hot soapy water as soon as possible after leaving the water



### Where do you get it?

- The adult parasite lives in the blood of infected animals such as ducks
- The parasites are passed through the infected animals through their feces

### Do Not feed the waterfowl



Human food is harmful to birds, increasing their chance of disease.

Bird droppings add nutrients which increase algae and aquatic weed growth in the lake.

Parasites from waterfowl cause "swimmers' itch".

Dense bird populations leave an unhealthy and unsightly mess on shore.

Thank you for your cooperation.



### What Can We Do Next?

The main cause of Swimmer's Itch is the parasite that is passed to the water from infected animals such as ducks. Ducks are found in large concentrations near our swimming beaches primarily because of the availability of food.

### What can you do?

- DO NOT feed the ducks
- Clean all trash and left-over food before leaving the beach

Questions? Contact the City of Lake Stevens Surface Water Department at (425) 622-9442

[sfarrant@lakestevenswa.gov](mailto:sfarrant@lakestevenswa.gov)

Or the Snohomish County Health District at

<http://snohd.org> or (425) 339-5200